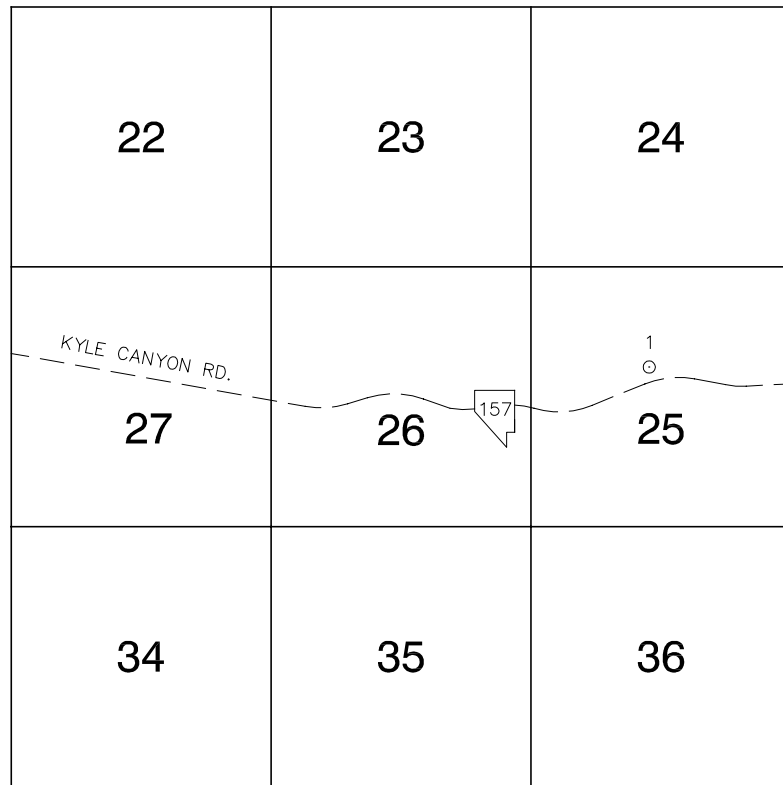


## Township 19 South, Range 57 East Southeast Quarter



NORTH AMERICAN VERTICAL  
DATUM OF 1988  
— ALL ELEVATIONS IN METERS —

No.	STATION	ELEVATION (METERS)	S E T	DESCRIPTION
1	3C97 25C4 2003	1751.950	S E T	RIVET AND ROUND ALUMINUM PLATE IN A CONCRETE HEADWALL, NORTH SIDE OF KYLE CANYON RD. 0.15 MILES EAST OF MILE MARKER 7
2				
3				
4				
5				
6				
7				
8				
9				
10				
11				

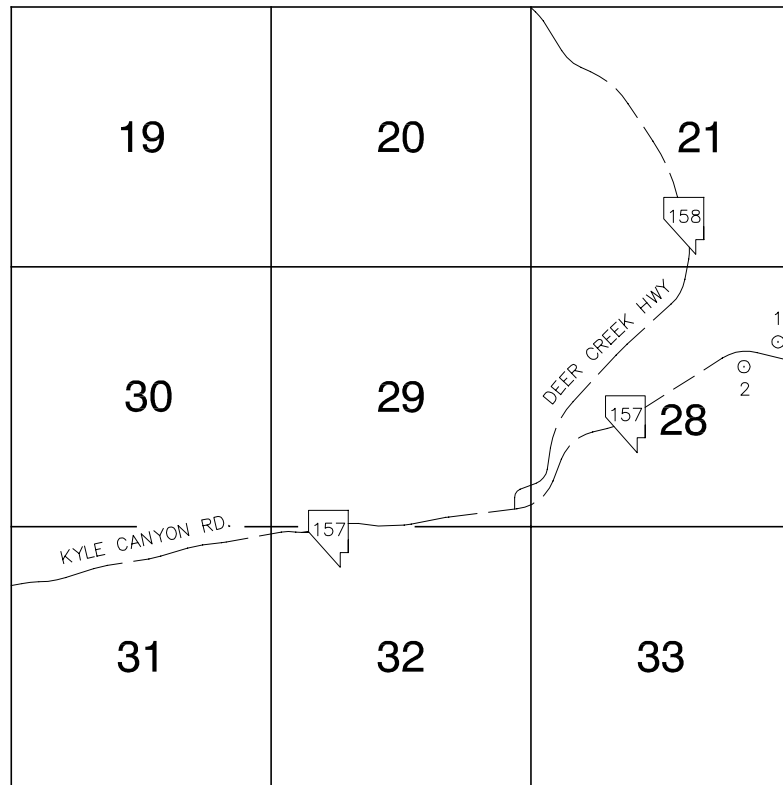
### CLARK COUNTY VERTICAL CONTROL v.2003

CLARK COUNTY SURVEYOR'S OFFICE  
5051 SOUTH PARADISE ROAD  
LAS VEGAS, NEVADA 89119  
(702) 455-0640

CONVERSION FACTOR:  
METERS X  $\left(\frac{3937}{1200}\right)$  = U.S. SURVEY FEET

REVISED 08/01/2003	SHEET 1 OF 1	<b>19-57</b> <b>SE</b>
-----------------------	-----------------	---------------------------

## Township 19 South, Range 57 East Southwest Quarter



NORTH AMERICAN VERTICAL  
DATUM OF 1988  
- ALL ELEVATIONS IN METERS -

No.	STATION	ELEVATION (METERS)	S E T	DESCRIPTION
1	3C97 28NE6 2003	2007.009	S E T	RIVET AND ROUND ALUMINUM PLATE IN A CONCRETE STEP, IN FRONT OF A 10' X 15' BUILDING WITH A GREEN ROOF. ±125 FEET NORTH OF KYLE CANYON RD, ±0.5 MILES WEST OF MILE MARKER 5.
2	3C97 28NE6 2003	2017.733	S E T	RIVET AND ROUND ALUMINUM PLATE IN THE NE CORNER OF A CONCRETE ELECTRICAL PAD, SOUTH SIDE OF KYLE CANYON RD, 0.5 MILES WEST OF MILE MARKER 5
3				
4				
5				
6				
7				
8				
9				
10				
11				

### CLARK COUNTY VERTICAL CONTROL v.2003

CLARK COUNTY SURVEYOR'S OFFICE  
5051 SOUTH PARADISE ROAD  
LAS VEGAS, NEVADA 89119  
(702) 455-0640

CONVERSION FACTOR:  
METERS X  $\left(\frac{3937}{1200}\right)$  = U.S. SURVEY FEET

REVISED  
08/01/2003

SHEET  
1 OF 1

**19-57**  
**SW**